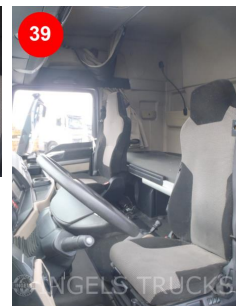
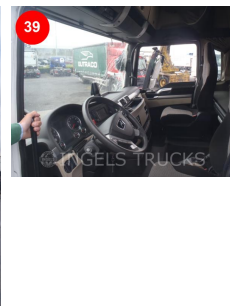


W W W. INGELS .BE



General		Options
ID-number	MA39	1 BED
Brand	MAN	AIRCO
Model	TGX 18.460	RADIO
Registration year	2019	STANDVERWARMING
Traction	4x2	AUTOMAAT
Technical specifications		ABS
PK	460,00	MOTOR REM
Emission	EURO-6	EBS
Cabin	XLX cabine	SCHIJFREMME VOOR
Superstructure	Standard tractor	VOLSPOILER
Milage	445000	DIFF LOCK
Gearbox	AUTO	BLADVERING VOOR
Axles and tires		LUCHTVERING ACHTER
Tires 1° axle	315/70R22.5 4mm - 4mm	Description
Tires 2° axle	315/70R22.5 10mm - 10mm	ENGINE RUNNING / TRUCK DRIVING
Suspension 1° axle	Steel suspension 7500kg	+++
Suspension 2° axle	Air suspension 13000kg	MOTEUR TOURNANT / CAMION ROULANT
Dimensions and weight		
Length	0,00 mm	
Width	0,00 mm	
Height	0,00 mm	
Volume	0 m ³	
Nett Weight	7516,00 kg	
Gross Weight	19000,00 kg	
Total Gross Weight	0,0000 kg	