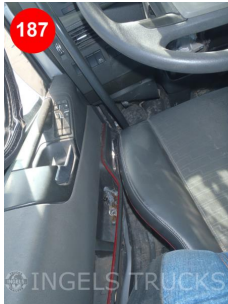
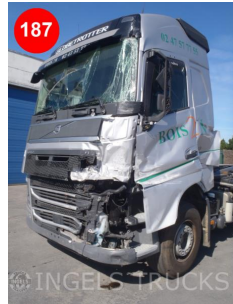


W W W. INGELS .BE



| General | | Options | |
|--------------------------|-------------------------|--------------------|--|
| ID-number | VO187 | SERVICEBOEK | |
| Brand | VOLVO | AUTOMAAT | |
| Model | FH 460 | MOTOR REM | |
| Registration year | 2015 | SCHIJFREMME VOOR | |
| Traction | 6x2 | ABS | |
| Technical specifications | | EBS | |
| PK | 460,00 | SCHIJFREMME ACHTER | |
| Emission | EURO-6 | PTO | |
| Cabin | GLOBETROTTER | ZONNEKLEP | |
| Superstructure | Hookloader | EXTRA LICHTEN | |
| Milage | 273123 | MATERIAALKOFFER | |
| Gearbox | AUTO | DIFF LOCK | |
| Axles and tires | | BLADVERING VOOR | |
| Tires 1° axle | 385/65R22.5 15mm - 15mm | LUCHTVERING ACHTER | |
| Tires 2° axle | 315/80R22.5 15mm - 15mm | AANHANGERKOPPELING | |
| Tires 3° axle | 315/80R22.5 12mm - 12mm | 1 BED | |
| Suspension 1° axle | Steel suspension 9000kg | AIRCO | |
| Suspension 2° axle | Air suspension 13000kg | RADIO | |
| Suspension 3° axle | Air suspension 9500kg | STANDVERWARMING | |
| Wheelbase | 4800mm + 1360mm | STANDAIRCO | |
| Dimensions and weight | | EERSTE EIGENAAR | |
| Length | 0,00 mm | CENTRALE | |
| Width | 0,00 mm | VERGREDELING | |
| Height | 0,00 mm | TELEFOON | |
| Volume | 0 m ³ | EXTRA KASTEN | |
| Nett Weight | 12580,00 kg | Description | |
| Gross Weight | 31500,00 kg | MARREL AL THL 20 U | |
| Total Gross Weight | 44000,0000 kg | +++ | |
| | | CABIN IN STOCK | |
| | | +++ | |
| | | KABINE AUF LAGER | |